



Available to purchase after receiving your order confirmation email.

The Starlink Performance Wedge Mount is designed to attach to a variety of vehicles, including cars, boats and RVs. Crafted from durable, weather-resistant materials, the mount ensures a sturdy foundation for your Starlink, capable of withstanding various environmental conditions including winds up to 280 kmh (174 mph). The 8 deg tilt of the mount is designed to encourage water shedding, which helps maintain a strong connection during rain events.

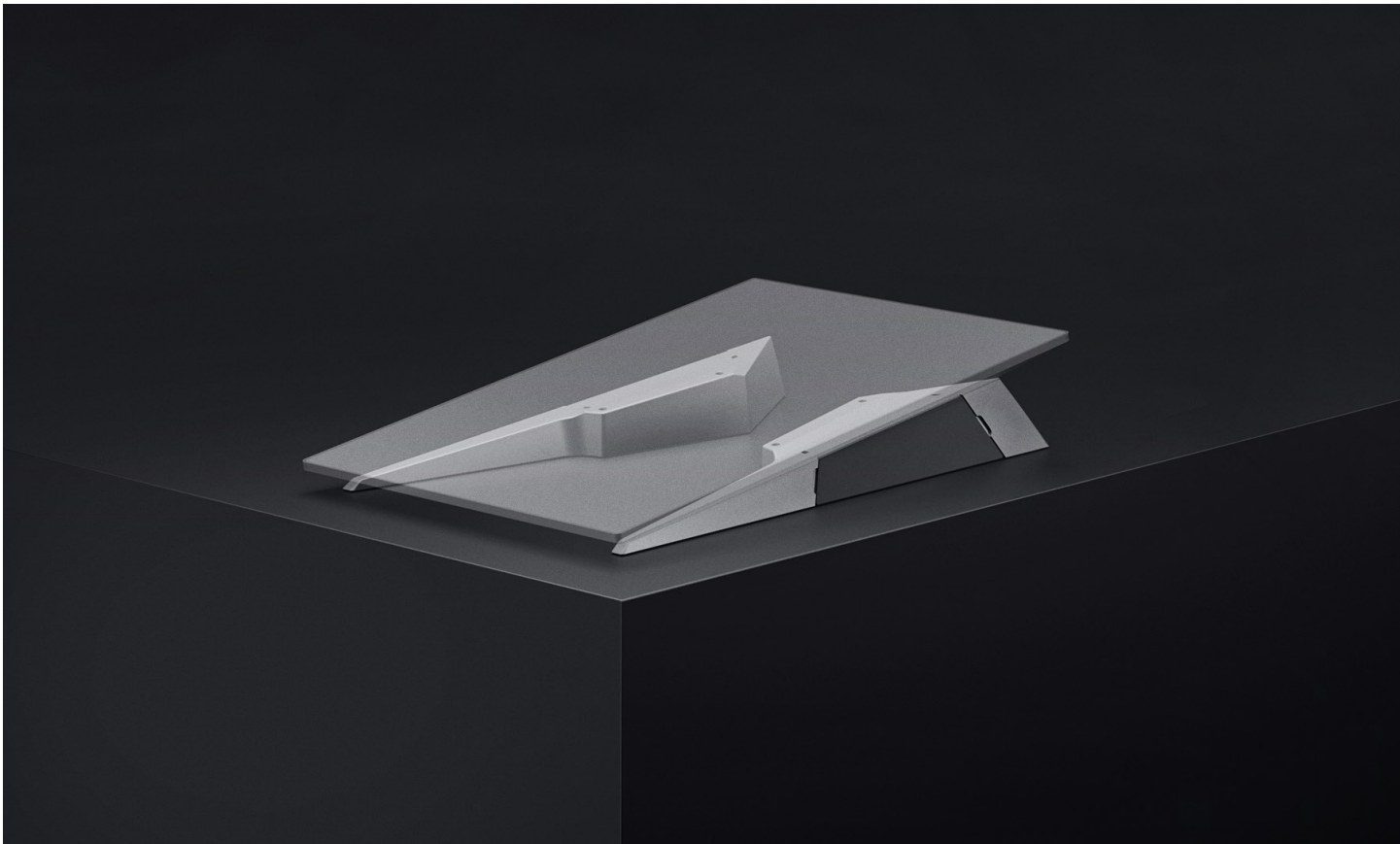
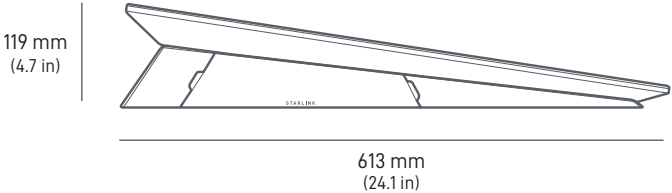
The Performance Wedge Mount has a bolt pattern that matches the previous generation Wedge Mount, streamlining the install process when upgrading to the new Starlink Performance Kit. The mount is accompanied by all necessary hardware and user-friendly instructions, ensuring a hassle-free setup process.

Compatibility:
Starlink Performance

Kit Contents:
Wedge Mount, 8x M6 Machine Screws, 4x M6 Lock Nuts, 4mm Hex Key

Package Dimensions:
661 mm X 226 mm X 97 mm (26.0 in X 8.9 in X 3.8 in)

Package Weight:
2.1 kg (4.5 lbs)



The Starlink Performance Flat Mount is designed to provide a sleek, low-profile installation option on variety of vehicles, including cars, boats and RVs. Crafted from durable, weather-resistant materials, the mount can ensure a sturdy and enduring foundation for your Starlink, capable of withstanding various environmental conditions including winds up to 280 kmh (174 mph). The mount has a 2 deg tilt, which is less optimal for maintaining a strong connection if stationary during wet weather than the 8 deg tilt of the Wedge Mount.

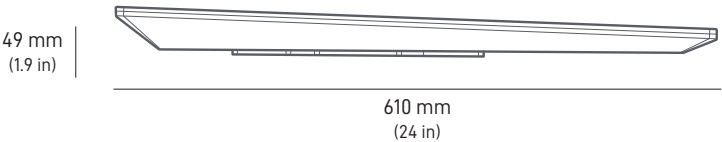
The mount is accompanied by all necessary hardware and user-friendly instructions, ensuring a hassle-free setup process.

Compatibility:
Starlink Performance

Kit Contents:
Flat Mount, 4x M6 Machine Screws, 4x M6 Flat Head Screws, 4x M6 Lock Nuts, 4mm Hex Key

Package Dimensions:
324 mm X 184 mm X 44 mm (12.8 in X 7.2 in X 1.7 in)

Package Weight:
1.0 kg (2.2 lbs)



The Starlink Performance Pipe Adapter is designed to attach to any existing pole with a minimum diameter of 38 mm (1.5in) and a maximum diameter of 60 mm (2.4 in). This adaptable and sturdy device allows seamless installation onto a variety of pole sizes, offering flexibility and ease in positioning your Starlink for optimal performance.

Crafted from durable, weather-resistant materials, the mount can ensure a sturdy and enduring foundation for your Starlink, capable of withstanding various environmental conditions.

The Starlink Performance Pipe Adapter is engineered for easy installation and is accompanied by all necessary hardware and user-friendly instructions, ensuring a hassle-free setup process.

ONLY INTENDED TO BE USED WITH METAL PIPES, NOT PVC AND PLASTIC PIPES.

Compatibility:

Starlink Performance

Kit Contents:

Pipe Adapter, 4x M6 Machine Head Screws, 2x Hex Keys

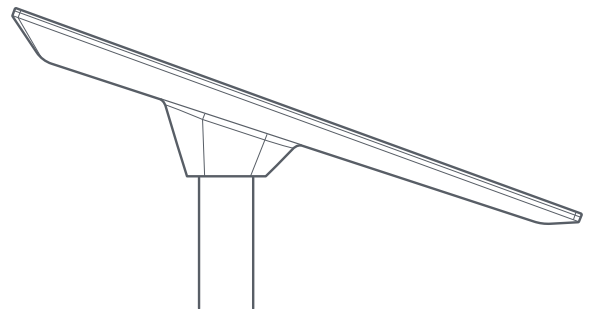
Package Dimensions:

320 mm X 290 mm X 109 mm (12.6 in X 11.4 in X 4.7 in)

Package Weight:

2.2 kg (4.7 lbs)

218 mm
(8.6 in)



The Starlink Performance Wall Mount is designed for installation on an exterior wall near the top of the gable or fascia. This wall mount can accommodate a 4" overhang maximum and offers a secure, long-reaching platform to optimize the placement of your Starlink for the best connectivity and performance.

Crafted from durable, weather-resistant materials, the mount ensures a sturdy and enduring foundation for your Starlink Performance, capable of withstanding various environmental conditions. Its elongated design allows for greater flexibility in positioning, enabling easy alignment and adjustment to maximize signal reception.

Easy to install and adjust, the wall mount comes with all necessary hardware and instructions, simplifying the setup process for a hassle-free experience.

Compatibility:

Starlink Performance

Kit Contents:

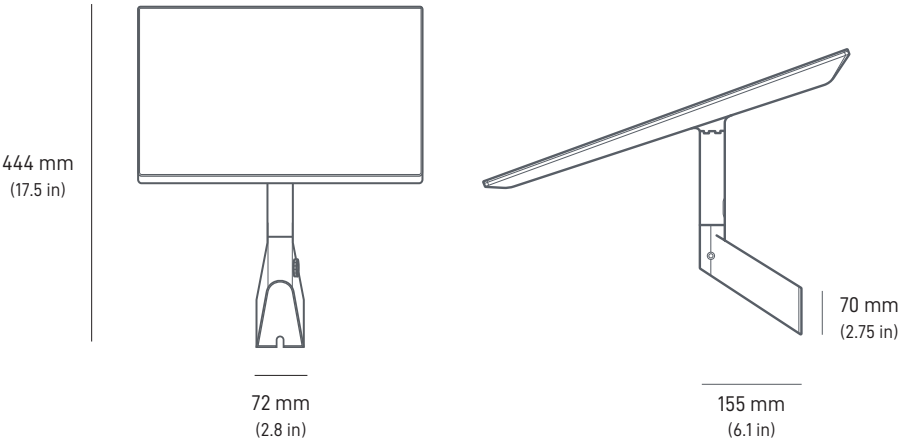
Wall Mount, Aesthetic Cover, Mast, Silicone, 4x 12mm M6 Flanged Machine Button Head Screws, 2x M10 Lag Screws, 4mm Hex Key

Package Dimensions:

305 mm X 300 mm X 269 mm (12.0 in X 11.8 in X 10.6 in)

Package Weight:

Mount: 5.8 kg (12.8 lbs)
Ballast: 25.3 kg (55.8 lbs)



The Advanced Power Supply can use AC or DC power inputs to power your Starlink, or alternatively connect both power sources at once when utilizing a battery backup connected to the DC input. The Power Supply includes a LAN port to connect either a Starlink or third party router or connect directly to a network switch. An integrated mount can be used to mount to a wall or a DIN rail on a server rack.

The Advanced Power Supply introduces a new microcontroller to provide additional telemetry to users and customer support including power inputs / outputs, ethernet metrics, grid brownout, and connector water detection.

Compatibility:

Starlink Performance, Starlink Standard

Kit Contents:

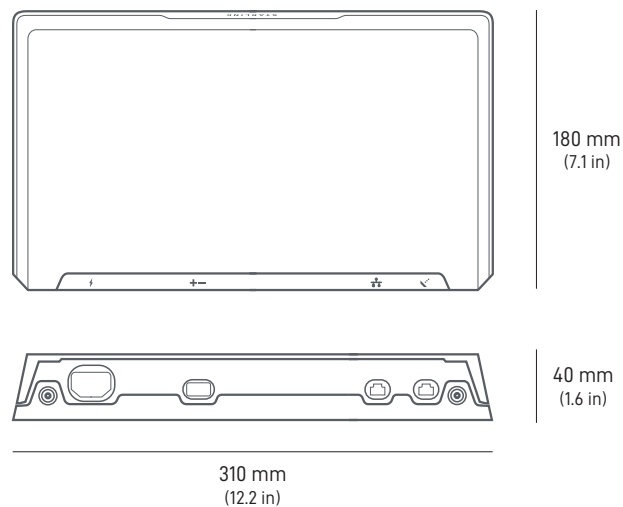
Advanced Power Supply, AC Power Cable, DC Power Cable

Package Dimensions:

388 X 247 X 107 mm (15.3 in x 9.7 in x 4.2 in)

Package Weight:

3.6kg (7.9 lb)



The Gen 3 Router introduces WiFi 6 and tri-band radios to Starlink. With improved range, performance, and device support, the Starlink Gen 3 router will extend your WiFi network throughout your home or business to provide a more consistent and reliable connection with faster speeds.

The Performance Gen3 Router Kit includes a 5m Starlink Cable, which connects the router to the Advanced Power Supply. This kit does not include a Router Power Supply, so it is not suitable for setting up a wireless mesh network. Please purchase a Gen3 Mesh Kit from the Starlink Shop if setting up a wireless mesh network.

Compatibility:

Starlink Performance

Kit Contents:

Gen 3 Router, 5m Starlink Cable

Ethernet Ports:

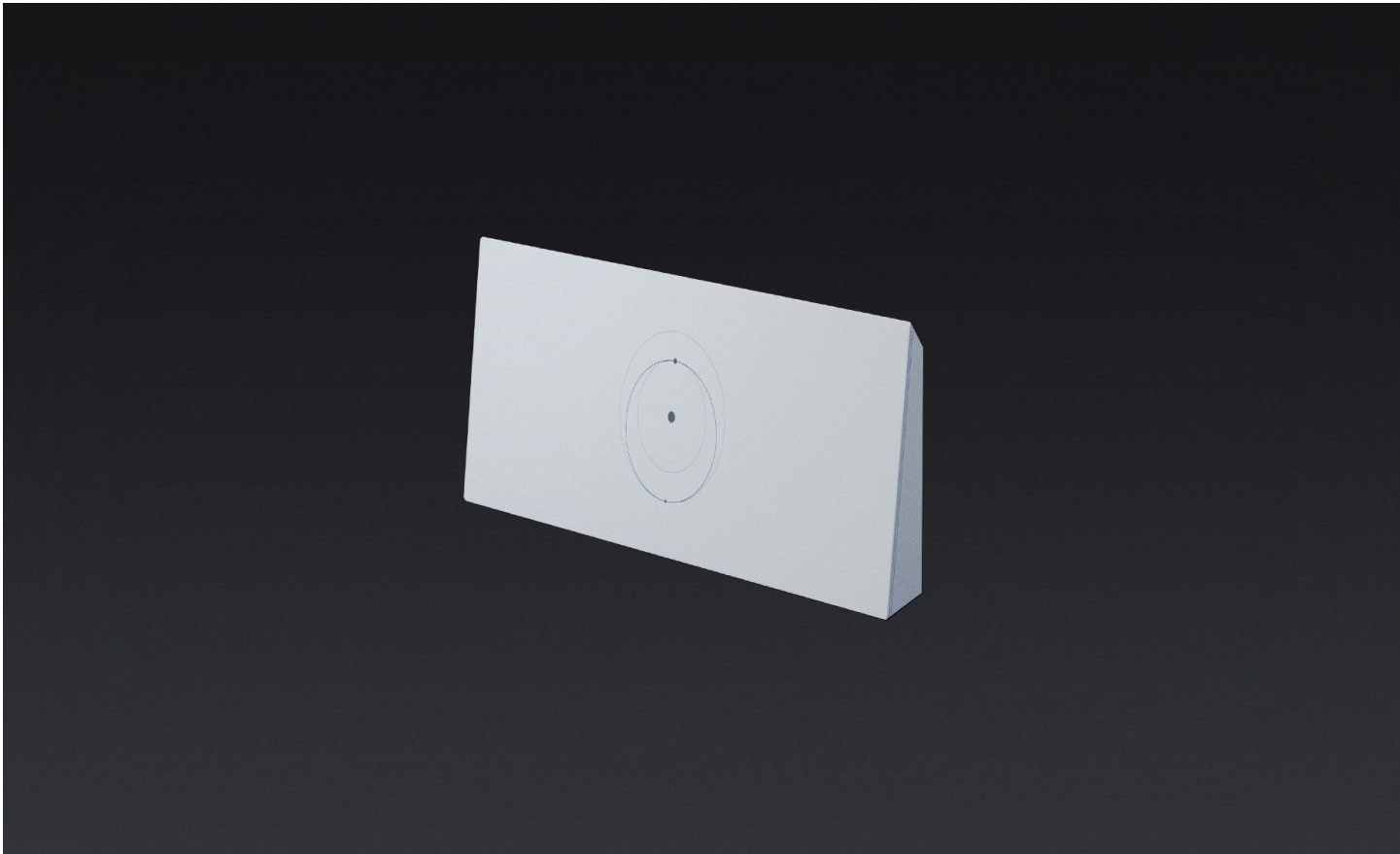
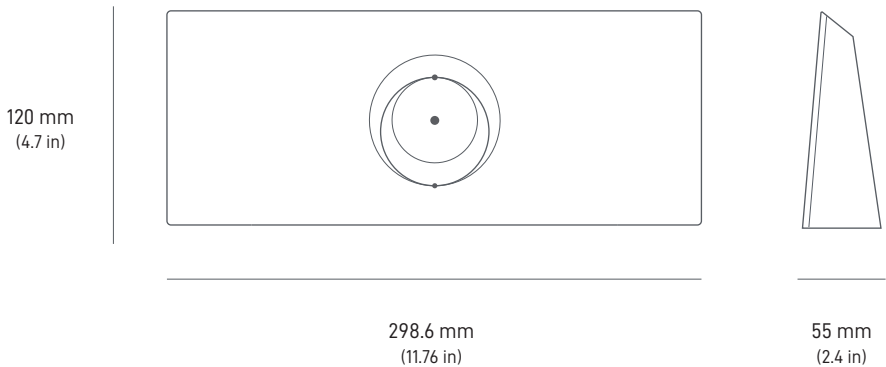
Two (2) Latching Ethernet LAN ports with removable cover

Package Dimensions:

346 mm X 152 mm X 100 mm
(13.6 in X 6.0 in X 3.9 in)

Package Weight:

1.0 kg (2.2 lbs)



The Router Mount is designed to mount the Gen 3 Router directly to a wall or other surface.

It is ideal for home or office use when no desk space is available, or for mobility applications where space efficiency is paramount.

Once the Router Mount is installed, the Gen 3 Router is easily snapped into place and cable retention ensures the cables are not accidentally pulled out.

Compatibility:

Gen 3 Router

Kit Contents:

Router Mount, 2x Screws,
2x Drywall Anchors

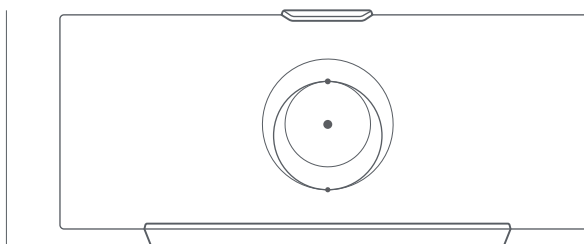
Package Dimensions:

250 x 165 x 85 mm (9.8 x 6.5 x 3.3 in)

Package Weight:

0.34 kg (0.75 lbs)

132.5 mm
(5.2 in)



298.6 mm
(11.76 in)



66 mm
(2.60 in)



PERFORMANCE CABLE 5M

The 5m cable is designed to replace the Starlink Performance 25m Cable from the Performance Kit when a shorter length is desired between your install location and the power supply.

Compatibility:

Starlink Performance

Cable Length:

5m (16.4 ft)

Package Dimensions:

99 mm x 216 mm x 76 mm (3.9 in x 8.5 in x 3 in)

Package Weight:

0.5 kg (1.0 lbs)



PERFORMANCE CABLE 25M

The 25m cable is designed to replace the Starlink Performance 25m Cable from the Performance Kit in case of damage or if you need an extra cable outside of your permanent installation.

Compatibility:

Starlink Performance

Cable Length:

25m (82 ft)

Package Dimensions:

221 x 406 x 66 mm (8.7 in x 16 in x 2.6 in)

Package Weight:

1.7 kg (3.75 lbs)



PERFORMANCE CABLE 50M

The 50m cable is designed to replace the Starlink Performance 25m Cable from the Performance Kit when a shorter length is desired between your install location and the power supply.

Compatibility:

Starlink Performance

Cable Length:

50m (164 ft)

Package Dimensions:

330 mm x 343 mm x 91.4 mm (13 in x 13.5 in x 3.6 in)

Package Weight:

3.3 kg (7.3 lbs)



5M STARLINK ETHERNET CABLE

The 5m ethernet cable is designed to replace the 5m Starlink Ethernet Cable from the Performance Kit in case of damage or if you need an extra cable outside of your permanent installation.

Compatibility:

Starlink Performance, Starlink Standard

Cable Length:

5 m (16.4 ft)

Package Dimensions:

102 mm x 325 mm x 33mm (4.0 in x 12.8 in x 1.3 in)

Package Weight:

0.3 kg (0.7 lbs)



AVAILABLE IN FALL 2025**STARLINK PERFORMANCE CONNECTOR
FIELD TERMINATION KIT**

The Starlink Performance Connector Field Termination Kit is used for installation of the Performance Connector onto an existing cable. The field termination kit is ideal for customers replacing an existing Starlink High Performance installation with a cable that is difficult to re-run.

Compatibility:

Starlink Performance

Package Dimensions:

150 mm x 231 mm x 79 mm (5.9 in x 9.1 in x 3.1 in)

Package Weight:

0.24 kg (0.5 lbs)

**AVAILABLE IN FALL 2025****STARLINK CABLE FIELD TERMINATION KIT**

The Starlink Cable Field Termination Kit is used for installation of the Starlink Cable connector onto an existing cable. The field termination kit is ideal for customers replacing an existing Starlink High Performance installation with a cable that is difficult to re-run.

Compatibility:

Starlink Performance Cables, Starlink Performance
(Gen 1 and 2) Cables

Package Dimensions:

150 mm x 231 mm x 79 mm (5.9 in x 9.1 in x 3.1 in)

Package Weight:

0.32 kg (0.7 lbs)

